



# Virtual Training Workshop

## "Introduction to Marine Biofouling: Impacts and Management of Risks"

Partner Countries

Hello!

¡Hola!

Disponible en Español



Argentina



Chile



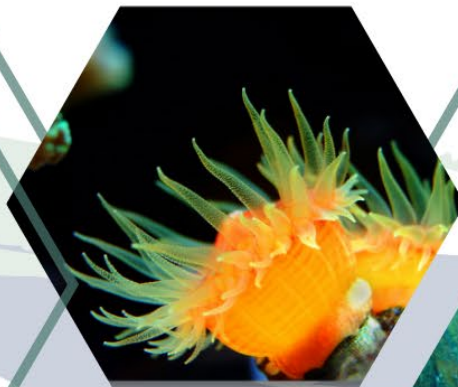
Panama

Date

15 -18 January 2023

Time

1000-1300hrs  
EST (UTC-5)



Source: Sea and Job



# AGENDA

## Day 1

**MONDAY 15<sup>TH</sup> JANUARY 2024**

### *BIOFOULING AND INVASIVE SPECIES – A GLOBAL PROBLEM*

- 1000-1020hrs. **Opening and Welcoming Remarks (IMO, MTCC Latin America and MTCC Caribbean, AMP, NORAD)**
- 1020-1050hrs. **Introduction to Course Programme (MTCC Latin America/MTCC Caribbean)**
- 1050-1100hrs. **BREAK**
- 1100-1150hrs. **Part 1: Introduction to Biofouling – A with Q&A (Scientist)**
- 1150-1200hrs. **BREAK**
- 1200-1250hrs. **Part 1: Introduction to Biofouling – B with Q&A (Scientist)**

## Day 2

**TUESDAY 16<sup>TH</sup> JANUARY 2024**

### *COST AND RISKS: IMPACTS ON SHIPS, SOCIETY, AND ENVIRONMENT*

- 1000-1050hrs. **Part 2: Factors Influencing Biofouling - with Q&A (Scientist)**
- 1050-1100hrs. **BREAK**
- 1100-1150hrs. **Part 3: Operational and Environmental Benefits - with Q&A (MTCC Caribbean/MTCC Latin America)**
- 1150-1200hrs. **BREAK**
- 1200-1250hrs. **Case Study 1 - Latin America Specific**

## Day 3

**WEDNESDAY 17<sup>TH</sup> JANUARY 2024**

### *HOW TO COMBAT BIOFOULING?*

- 1000-1050hrs. **Part 4: Preventative Practices- with Q&A (Technology Providers: Antifouling, Performance Monitoring system, and Marine Growth Prevention)**
- 1050-1100hrs. **BREAK**
- 1100-1150hrs. **Part 5: Reactive Practices - with Q&A (Technology Providers)**
- 1150-1200hrs. **BREAK**
- 1200-1250hrs. **Case Study 2 - Global Case Studies (Australia, New Zealand, Etc.)**

## Day 4

**THURSDAY 18<sup>TH</sup> JANUARY 2024**

### *WHAT ARE THE RULES OF THE GAME?*

- 1000-1050hrs. **Part 6: The IMO Guidelines & Case Study (IMO Representative/BIMCO)**
- 1050-1100hrs. **BREAK**
- 1100-1150hrs. **Part7: National Legislation (LPC Representative or (Ministry for Primary Industries – Biosecurity New Zealand))**
- 1150-1200hrs. **BREAK**
- 1200-1300hrs. **Argentina, Chile, and/or Panama - Present its existing/ projected Regulatory Framework for Biofouling Management**
- Course Evaluation and Course Feedback Form**
- Closing Remarks (MTCC Caribbean)**

*END OF THE TRAINING WORKSHOP*